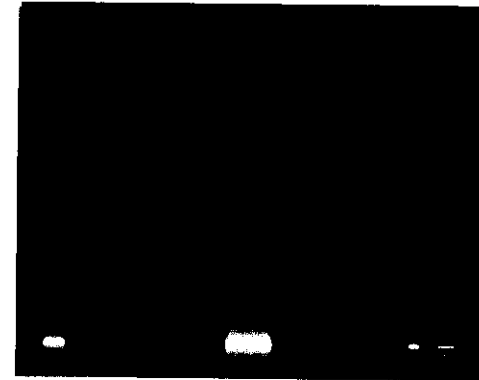


# *User's Manual*

## COLOR LCD PUBLIC VIEW MONITOR



# CONTENTS

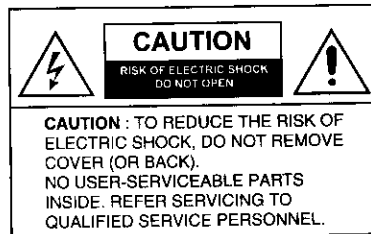
● Important Safety Instructions -----	3
● FCC Requirements -----	5
● Safety Notices -----	6
● Location control -----	8
● Remote Control Unit -----	9
● Main menu Control Methods -----	10
● WDR CAMERA Control Methods -----	12
● Functions and Control Methods -----	15
● Appendix A: Display modes -----	23
● Appendix B: Display modes -----	24
● When using VESA standard wall-mounting devices -----	25
● To connect the power -----	26
● Specifications -----	27

# Important Safety Instructions

## Shock Hazard Marking and Associated Graphical Symbols



## Explanation of Safety Related Symbols



This symbol is intended to alert the user to the presence of uninsulated "dangerous voltage" within the product's enclosure that may be of sufficient magnitude to constitute a risk of electric shock to persons.



This symbol is intended to alert the user to the presence of important operating and maintenance (servicing) instructions in the literature accompanying the appliance.

**WARNING** - To Reduce The Risk Of Fire Or Electric Shock, Do Not Expose This Apparatus To Rain Or Moisture.



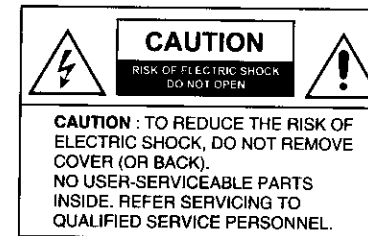
## Correct Disposal of This Product (Waste Electrical & Electronic Equipment)

This marking shown on the product or its literature, indicates that it should not be disposed with other household wastes at the end of its working life. To prevent possible harm to the environment or human health from uncontrolled waste disposal, please separate this from other types of wastes and recycle it responsibly to promote the sustainable reuse of material resources.

Household users should contact either the retailer where they purchased this product, or their local government office, for details of where and how they can take this item for environmentally safe recycling.

Business users should contact their supplier and check the terms and conditions of the purchase contract. This product should not be mixed with other commercial wastes for disposal.

# Important Safety Instructions



Before connecting the AC power cord to the DC adapter outlet, make sure the voltage designation of the DC adapter corresponds to the local electrical supply.

Never insert anything metallic into the cabinet openings of the Liquid Crystal Display LCD Monitor; doing so may create the danger of electric shock.

To avoid electric shock, never touch the inside of the LCD Monitor. Only a qualified technician should open the case of the LCD Monitor.

Never use your LCD Monitor if the power cord has been damaged. Do not allow anything to rest on the power cord, and keep the cord away from areas where people can trip over it.

Be sure to hold the plug, not the cord, when disconnecting the LCD Monitor from an electric socket.

Openings in the LCD Monitor cabinet are provided for ventilation. To prevent overheating, these openings should not be blocked or covered. Also, avoid using the LCD Monitor on a bed, sofa, rug, or other soft surface. Doing so may block the ventilation openings in the bottom of the cabinet.

If you put the LCD Monitor in a bookcase or some other enclosed space, be sure to provide adequate ventilation. Put your LCD Monitor in a location with low humidity and a minimum of dust.

Do not expose the LCD Monitor to rain or use it near water. (in kitchen, near swimming pool, etc.). If the LCD Monitor accidentally gets wet, unplug it and contact an authorized dealer immediately. You can clean the LCD Monitor with a damp cloth when necessary, but be sure to unplug the LCD Monitor first.

Place the LCD Monitor on a solid surface and treat it carefully.

The screen is made of thin glass with a plastic front surface and be damaged if dropped, hit or scratched.

Do not clean the front panel with keton-type materials (e.g., acetone), ethyl alcohol, toluene, ethylacetic, methyl, or chloride - these may damage the panel.

Locate your LCD Monitor near an easily accessible AC outlet.

# FCC Requirements



This device complies with Part 15 of the FCC Rules and Regulations. Operation is subject to the following two conditions: (1) This device may not cause harmful interference, and (2) this device must tolerate any interference encountered, including interference that may cause improper operation.

The equipment has been tested and found to comply with the requirements stipulated in Part 15 of FCC regulations for a Class B digital device. These requirements are designed to provide reasonable protection against harmful interference in a residential installation.

This equipment generates, uses and can radiate radio frequency energy and, if not installed and used in strict compliance with the instructions, may disrupt radio communications. However, there is no guarantee that interference will not occur in a particular installation. If this equipment does cause detrimental interference with radio or television reception, which can be determined by turning the equipment off and on, the user is encouraged to try to correct the interference by taking one or more of the following measures:

- Reorienting or relocating the receiving antenna.
- Increasing the separation between the equipment and the receiver.
- Connecting the equipment into an outlet on a circuit different from that to which the receiver is connected.
- Consulting the dealer or an experienced radio/TV technician for help.

Shielded interconnected cables and shielded power cords must be used with this equipment to ensure compliance with the pertinent RFD emission limits governing this device.

Changes or modifications not expressly approved by the manufacturer could void the user's right to operate the equipment.

Notice of Compliance with Canadian Interference-causing Equipment Regulations.

This Class B digital apparatus meets all requirements of the Canadian Interference-Causing Equipment Regulations.

Cet appareil numérique de classe B satisfait toutes les exigences des réglementations canadiennes inhérentes aux équipements générant des interférences.

Thank you for purchasing our product.

Before using it, please read this user's manual carefully and apply it correctly and safely.

Please keep this manual close to you so you can refer to it anytime after reading it.

Also, for the transportation of the product, please attach this manual without fail.

Please observe the notes below.

1. Use at the rated power voltage.  
Use of non-rated voltage may cause fire, electric shock and breakdown.
2. Do not open the cabinet and external cover.  
The high voltage inside of this product may cause the electric shock.
3. Do not remodel or disassemble this product.  
Remodeling or disassembling in wrong method may cause the electric shock or breakdown.
4. Do not insert or drop any foreign substance such as metal or flammable object inside from the air hole.  
It may cause fire, electric shock or breakdown.  
If any foreign substance is inserted inside of this product, turn off the power, pull the plug out of the socket and contact the sales department. Do not use the product with the foreign substance in.
5. Do not place any vase, potted plant, cup, medicine and any container with water on this product.  
If the liquid is spilt, it may cause the fire, electric shock or breakdown.
6. Do not place this product with water nor moisture.  
If water flows in it, it may cause the fire, electric shock or breakdown.  
If there is water inside of the product, turn off the power immediately, pull the plug out of the socket and contact the sales department.  
Do not use the product with water in.
7. Never touch the antenna lie or power cord if it starts to discharging.  
It may cause the electric shock.
8. If any impact is applied, the parts inside of the product may be fallen out or broken due to the cause of fire, electric shock or breakdown.
9. Clean the dust on the power plug periodically.  
The dusty power plug may cause the poor insulation due to the moisture to be the reason of fire.
10. Do not destroy, process, make closer to heating device, bend or twist forcibly, place any heavy object on nor bind the power cord or power plug.  
If it is used in the broken condition, it may cause fire or electric shock.
11. Do not touch the power plug with wet hands.  
If you pull in or push the power plug with wet hands, it may cause electric shocks.
12. Put the power plug completely.  
Putting the plug incompletely may cause the electric shock or fire by the generation of heat.
13. Do not use any non-rated power socket with numerous devices jointed on one power socket or cable device.  
The wire of non-designated capacity may cause the fire due to the generation of heat.
14. In case of malfunction, turn off the power switch immediately and pull out the power plug.  
If this product is used in the abnormal condition such as damage to it, foreign substance inside of the product, generation of joints, smelling, smoking, overheating and non production of signal, it may cause fire, electric shock or breakdown.  
Turn off the power switch immediately, pull the power plug out of the socket and contact to the sales store..
15. Leave space 10 cm or more from the wall for the installation of the device.  
Do not install it close to the wall nor block the ventilation of the air.  
Insufficient ventilation or accumulated heat inside of the product may cause the fire.
16. Do not install it at the unstable location such as on the bouncing prop or tilted place.  
It may be tipped over as it loses balance or damaged as it is fallen down.

- 1. Do not install at the place with moisture or dust.  
It may cause the fire or the electric shock
- 2. Do not install it at the place with poisonous gas.  
It may cause the fire.
- 3. Do not install it at the location with continuous vibration.  
It may be tipped over as it loses balance or damaged as it is fallen down.
- 4. Do not install it at the place on the strong magnetic field or current field.  
It may cause fire, electric shock or break down.  
This equipment may be observed deterioration of the picture by electromagnetic radiation in electromagnetic environment.
- 5. Fasten the wheel of the product or shelf with wheels when installing this product.  
If it moves or is tipped over, it may be damaged.
- 6. Do not leave it in the car under the burning sun for a long time.  
The high temperature may distort the cabinet or the parts or broken down or heated.  
If you use this product in this condition, it may cause the fire, electric shock or breakdown due to the short circuit or poor insulation.
- 7. Do not place any fire source such as candlelight close to this product or put it on this product.  
If it is tipped over or fallen down, it may cause damages or fire.
- 8. Do not sprinkle water drops or water on this product.  
It may cause the fire, the electric shock or breakdown.
- 9. Do not place heavy objects on this product.  
It may be tipped over as it loses balance or damaged as it is fallen down.
- 10. Do not transport it with the power cord or the connection cable connected.  
If you move this product with the power cord or the connection cable connected, the damaged power cord, connection cable or connection terminal may cause the fire, the electric shock or breakdown.
- 11. Pull the power cord out while holding the plug portion.  
If you pull the power cord out by force, the cord may fire or the electric shock.
- 12. Do not use it outdoor.  
Dust or rainstorm may cause the fire, electric shock or breakdown.
- 13. Do not climb on this product.  
If you climb on it, it may damage or hurt it.
- 14. 2 persons or more shall transport the device, which is heavier than 10kg.  
If you drop or damage the device, it may damage it.  
The weight is indicated on the user's manual.
- 15. Use this unit shall be connected to a mains socket outlet with a protective earthing connection.  
And connection cable, or those, which are indicated on the user's manual.  
If you do not use the designated power cord and connection cable, it may cause the electric shock or breakdown.
- 16. Turn off the power switch when connecting the power cord or connection cable.  
If you not turn off when connecting it, it may cause the electric shock or breakdown.
- 17. Do not use any chemical such as the paint thinner or benzine to clean the cabinet.  
It may scratch the surface or disappear the indication to cause wrong operation, which can be the reason for disorder.
- 18. Clean the cabinet with 5-6 time diluted neutral detergent water on smooth cloth as stirring to remove the contamination.  
After that, clean it with dry cloth to remove any stain.

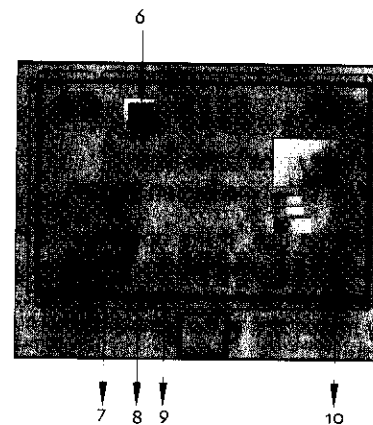
## LOCATION CONTROLS

Front

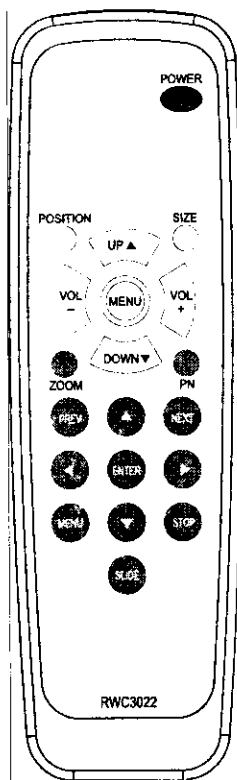


1. POWER  
: Press to turn the LCD monitor ON. The POWER LED LAMP will illuminate.
2. POWER LED LAMP  
: When SET is normally operated, a green lamp is turned on.
3. IR
4. WDR (Wide Dynamic View) CAMERA
5. PIR SENSOR  
: Motion detection sensor
6. AV OUT
7. SD / MMC slot
8. CF slot
9. USB slot
10. AC INLET  
: Inlet the AC power (AC100~240V, 50/60Hz)

Rear



## REMOTE CONTROL UNIT



- POWER** : Power on / off  
**POSITION** : Changed the position of PIR picture  
**SIZE** : Display the picture with different scale (PIP or Full)  
**MENU** : Display MAIN MENU  
**UP(▲) / DOWN(▼)** : MAIN MENU select an item in the menu up and down  
**VOL(+ ) / VOL(- )** : Volume up and down  
**PN** : Subtitle on or off  
**PREV** : Go to previous track / page, slow backward, 1page up  
**NEXT** : Go to next track / page, fast forward, 1page down  
**ENTER** : Acknowledge menu selection, play  
**▲/▼/◀/▶** : Select an item in the menu up or down or left or right  
**MENU** : Display MMP(Multi media player) MENU  
**STOP** : Go to previous menu / Stop  
**SLIDE** : Slide show / Photo or ebook background music player

### BATTERY INSTALLATION

- ◆ Replace two batteries in the battery compartment at the same time.
- ◆ Insert "AAA" batteries, observing the polarity (+ or -) marked on the unit.

Batteries should last about a year under normal use. If the operation is unstable(either channel or volume does not change), replace the batteries. When the hand unit is not used for a long, or when the batteries are used up, take out the batteries to prevent possible leakage. To avoid any malfunction of the remote control, press only one button at a time.

## MAIN MENU CONTROL METHODS

### MENU Operation

- ① When you press the MENU button, the MENU window appears on screen.
- ② Press UP▲ or DOWN▼ button to move to the desired item.
- ③ Press VOL+/ VOL- button to select the desired item.
- ④ To shut down the MENU window, wait for time when the MENU window disappears or press the MENU button again.

### MENU Setting

```

MAIN MENU
Contrast
Brightness
Language
Reset
PIR                on
Screen             PIP
WDR Control
◆ Move ±:Sel.MENU:Exit
    
```

1. Press the MENU button.  
Result : MAIN MENU is display.
2. Use the UP▲ or DOWN▼ button to select setting.
3. Adjust to satisfy your preference by pressing the VOL+ or VOL- button.
4. When you are satisfied with the settings, press the MENU button.  
Repeatedly to return to normal viewing.

#### CONTRAST

Adjust the screen's contrast.

#### BRIGHTNESS

Adjust the screen's brightness.

### Language

```

MAIN MENU
Contrast
Brightness
Language
Reset
PIR                on
Screen             PIP
WDR Control
◆ Move ±:Sel.MENU:Exit
    
```

```

MAIN MENU
English
Français
Deutsch
Español
Portugues
Italiano
◆ Move ±:Sel.MENU:Exit
    
```

1. Press the MENU button.  
Result : MAIN MENU is display.
2. Use the UP▲ or DOWN▼ button to select setting.
3. Adjust to satisfy your preference by pressing the VOL+ or VOL- button.
4. When you are satisfied with the settings, press the MENU button.  
Repeatedly to return to normal viewing.

### Reset

```

MAIN MENU
Contrast
Brightness
Language
Reset
PIR                off
Screen             PIP
WDR Control
◆ Move ±:Sel.MENU:Exit
    
```

```

MAIN MENU
Contrast
Brightness
Language
Reset
PIR                on
Screen             PIP
WDR Control
◆ Move ±:Sel.MENU:Exit
    
```

1. Press the MENU button.  
Result : MAIN MENU is display.
2. Use the UP▲ or DOWN▼ button to select setting.
3. Adjust to satisfy your preference by pressing the VOL+ or VOL- button.  
Result : Changing the MAIN MENU Standard  
Default : Contrast - 60, Brightness - 60, PIR - On, Volume - 50

# MAIN MENU CONTROL METHODS

MAIN MENU  
 Contrast  
 Brightness  
 Language  
 Preset  
 Zoom  
 Screen  
 PIP Control  
 Move ±: Sel. MENU : Exit

Main picture display



1. Press the MENU button.  
Result : MAIN MENU is display.
2. Use the UP▼ or DOWN▲ button to select setting.
3. Adjust to satisfy your preference by pressing the VOL+ or VOL- button.  
Result : on - PIP picture is display.  
off - PIP picture is not display.

Built in camera picture display

MAIN MENU  
 Contrast  
 Brightness  
 Language  
 Preset  
 Zoom  
 Screen  
 PIP Control  
 Move ±: Sel. MENU : Exit

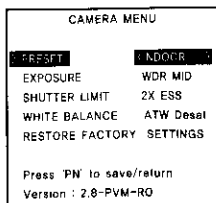


1. Press the MENU button.  
Result : MAIN MENU is display.
2. Use the UP▲ or DOWN▼ button to select setting.
3. Adjust to satisfy your preference by pressing the VOL+ or VOL- button.  
Result : PIP : PIR picture is display.  
Full : PIR picture is full display.

MAIN MENU  
 Contrast  
 Brightness  
 Language  
 Preset  
 Zoom  
 Screen  
 Full  
 PIP Control  
 Move ±: Sel. MENU : Exit



MAIN MENU  
 Contrast  
 Brightness  
 Language  
 Preset  
 Zoom  
 Screen  
 Full  
 PIP Control  
 Move ±: Sel. MENU : Exit



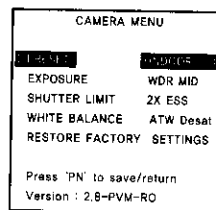
1. Press the MENU button.  
Result : MAIN MENU is display.
2. Use the UP▲ or DOWN▼ button to select setting.
3. Adjust to satisfy your preference by pressing the VOL+ or VOL- button.  
Result : WDR Control menu is display.

# WDR CAMERA CONTROL METHODS

## Adjusting the WDR Camera for PVM

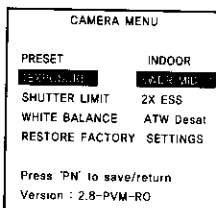
The PVM is equipped with a wide dynamic range camera to get the best pictures at the installation. The dynamic range of the camera is sensitive to the scene and needs to be set for the best performance. Firstly, set the tilt of the camera and fix the zoom and focus at the lens. Secondly, examine the picture for the dynamic range level for each PRESET with the combination of each EXPOSURE settings to get the best picture. Thirdly, try to adjust the position and/or the size of the metering zone and BIAS and/or RANGE in EXPOSURE >> WDR CUSTOM only if the presets are not satisfactory. Use UP▲, DOWN▼ buttons to move menu, VOL-, VOL+ buttons to change the settings and press MENU button short to select or long to return. Press 'PN' button to save the settings and exit the menu.

## PRESE Menu



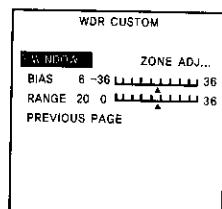
Default PRESET is <INDOOR>.  
 <NORMAL> : Produces an image that has average contrast. Suitable for normal indoor or low-contrast outdoor scenes.  
 <INDOOR> : Provides better leveling of image for in the darker areas of the scene. Suitable for indoor scenes that have higher contrast lighting.  
 <OUTDOOR> : Optimized for outdoor sunlit applications and provides better leveling for the brighter areas. Suitable for outdoor scenes having high contrast between sunlights and shadows.

## EXPOSURE Menu



Default EXPOSURE is <WDR MID>.  
 <WDR MID> : Provides the picture of the medium level of WDR at each PRESET  
 <WDR HIGH> : Used to increase the dynamic range when picture is lack of compensation.  
 <CUSTOM . . . > : Used for more customized compensation other than <WDR MID>,  
 <WDR LOW > and <WDR HIGH >  
 <BLC . . . > : Used to select one of BLC zones. WDR is not operating if BLC is selected.  
 <WDR LOW > : Used to reduce the dynamic range when picture is over-compensated.

## CUSTOM Menu



- To enter WDR CUSTOM menu, press MENU button at <CUSTOM . . . > of EXPOSURE menu.

<ZONE ADJ . . . > : Used to adjust the metering zone for WDR compensation.

BIAS : Offsets the dynamic range which is value automatically calculated.  
 RANGE : Sets the maximum dynamic range that camera will produce.

# WDR CAMERA CONTROL METHODS

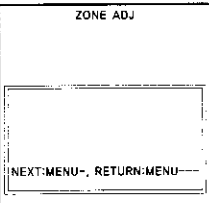
## ➔ ZONE ADJ Menu

- To enter ZONE ADJ menu, press MENU button at <ZONE ADJ . . . > of WDR CUSTOM menu.

White zone boundary stands for zone-move.  
To move ZONE, use UP▲, DOWN▼, VOL-, VOL+ buttons to find the proper location of zone for the best compensation of dynamic range.  
Press MENU button short to switch to Zone-Enlarge mode or long(more than 1 sec) to return.

Green zone boundary stands for Zone-Enlarge mode.  
To enlarge ZONE, use UP▲, DOWN▼, VOL-, VOL+ buttons to expand zone.  
Press MENU button short to switch to Zone-Reduce mode or long(more than 1 sec) to return.

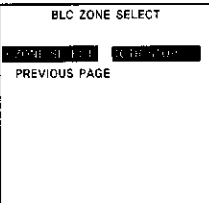
Red zone boundary stands for Zone-Reduce mode.  
To reduce ZONE, use UP▲, DOWN▼, VOL-, VOL+ buttons.  
Press MENU button short to switch to Zone-Move or long(more than 1 sec) to return.



## ➔ BLC ZONE SELECT Menu

- To enter BLC ZONE SELECT menu, press MENU button at <BLC . . . > of EXPOSURE menu.

Default BLC ZONE is <CTR SPOT >  
<CTR SPOT > : Back Light Compensation is weighted for center area(1/9 of entire screen)  
<LOWER 1/3 > : Back Light Compensation is weighted for lower 1/3 area.  
<MIDDLE 1/3 > : Back Light Compensation is weighted for middle 1/3 area.  
<UPPER 1/3 > : Back Light Compensation is weighted for upper 1/3 area.



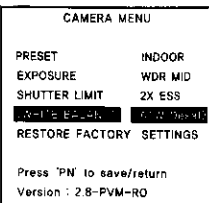
## 👉 SHUTTER LIMIT Menu

Default SHUTTER LIMIT is <2X ESS>.  
SHUTTER LIMIT can be set to <2X ESS>, <4X ESS>, <8X ESS>, <16X ESS>, <32X ESS> and <OFF >.  
The higher integration rate, the better sensitivity but the slower frame refresh.

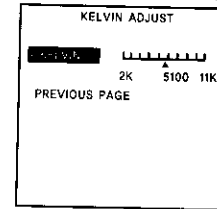


## 👉 WHITE BALANCE Menu

Default WHITE BALANCE mode is <ATW Desat >.  
<ATW Desat > : ATW is in full function in range of 2500K-8000K and gradient in ranges of 2000K-2500K and 8500K-11500K.  
<ATW Normal > : ATW is in function in range of 2500K-8000K only.  
<ATW Extend > : ATW is in function in range of 2000K-11500K.  
<MANUAL . . . > : White Balance can be set by Kelvin manually.



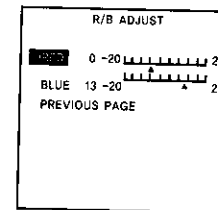
## ➔ MANUAL WHITE BALANCE - KELVIN ADJUST Menu



- To enter KELVIN ADJUST menu, press MENU button after selecting <KELVIN ADJUST> at <MANUAL . . . > of WHITE BALANCE menu.  
Use VOL-, VOL+ buttons to adjust the manual white balance in KELVIN color temperature.

Camera does not compensate white balance automatically and stay as set even though color temperature changes if set to <MANUAL . . . >.

## ➔ MANUAL WHITE BALANCE - R/B ADJUST Menu



- To enter R/B ADJUST menu, press MENU button after selecting <R/B ADJUST> at <MANUAL . . . > of WHITE BALANCE menu.  
Use VOL-, VOL+ buttons to adjust the manual white balance with RED and BLUE components.  
Camera does not compensate white balance automatically and stay as set even though color temperature changes if set to <MANUAL . . . >.

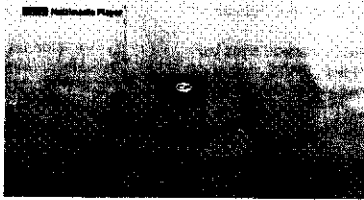


# FUNCTIONS AND CONTROL METHODS

# FUNCTIONS AND CONTROL METHODS

## Source selection

According to intended type of storages, select one and press Enter on the Remote then move on to function selection menu  
Select one out of 3 sources you want to activate and press Enter on the Remote. Then Function Selection Menu will appear.



1. Press the Power button
2. It will be able to select what signal by using the ◀/▶ buttons
3. Press Enter/ moving on to function selection menu

Note :  
\* NO DEVICE message appears, if the source selected on the remote is not connected

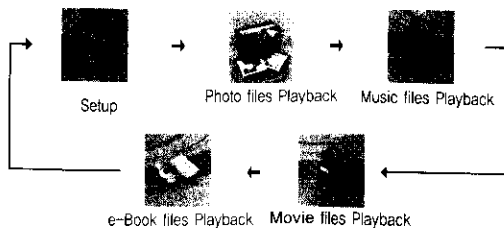


## Function selection



[ Function selection ] ( After Source Selection )

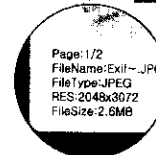
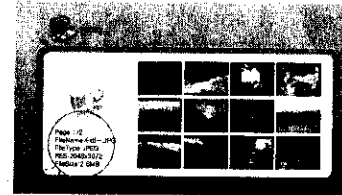
Select one of the 5 functions to operate and Press Enter on the Remote.



## PHOTO

Select the 'PHOTO' in the function menu then you can see the thumbnails.

### Photo Preview (Thumbnail)



Selected file information

Stop: go to previous page

◀/▶: select on item in the menu left and right

▲/▼: select on item in the menu up and down

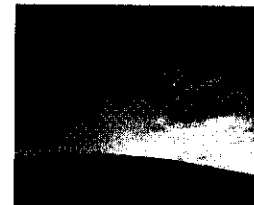
Enter: start playback

Prev/Next: press Prev/Next to view the rest of the pictures

Slide: Slide show background music  
(It is possible when the music file exists same folder)

### Photo - Photo Playback(Full Screen)

Thumbnails help know the content of the current folder or the whole source



Stop: go to previous menu

Prev: Previous Track

Next: Next Track

Menu: Help Menu Bar ON/OFF

\* During playback, Help Menu Bar will appear on the screen right after pressing 'MENU' on the remote.  
Now User have the capability to special operation such as Rotating, Zooming.

Slide: slide picture show with back ground music on.

→ At the state of Slide show,

\* For Music Help Menu Bar, press MENU

\* For Photo Help Menu Bar, press MENU a second time

\* To exit Help Menu Bar, press MENU again

\* Note

Secondary settings related to Slide Show can be made in the SETUP MENU

# FUNCTIONS AND CONTROL METHODS

## PHOTO Help Menu Bar

During Photo Playback or Photo Slide Show, Photo Help Menu Bar shows up on the screen if MENU button is pressed

(▶◀ buttons to move / Enter buttons to activate)



- 1 Start / pause playback
- 2 Stop Photo Playback and return to Photo Preview
- 3 rotate the picture 90° clockwise
- 4 display the picture with different scale (x2, x3, x4, x5, x1)
  - \* Zoomed picture can be moves up and down, left and right using arrow buttons on the Remote (not applicable some picture files)

- 5 playback previous picture
- 6 playback next picture
- 7 shows details of Photo



- 1 Start / pause playback
- 2 Stop playback and go back to music file list
- 3 go to previous track
- 4 go to next track
- 5 show details of Music
- 6 show ID3 Tag of Music
  - Repeat : Standard play (playback of the entire folder)
  - Folder Repeat (repeat the current folder)
  - File Repeat (repeat the current track)
  - (designate the file to repeat using ▲▼keys)

- Stop : go to previous menu
- ◀/▶ : select an item in the menu left and right
- Menu : Help Menu Bar ON/ OFF
- Enter : menu selection
- Prev : go to previous track
- Next : Go to next track

# FUNCTIONS AND CONTROL METHODS

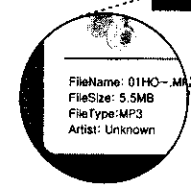
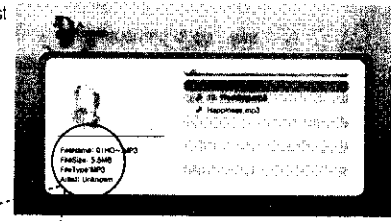
## MUSIC

After selecting Music Playback function, you will see Music File list on the screen

## Music - List / Playback

(Slide Show available)

File List



Selected file information

Highlight the file to playback and press Enter button on the Remote

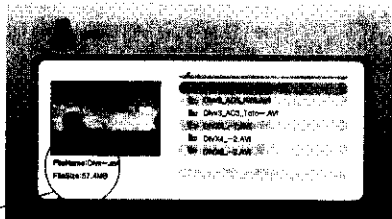
- Slide : Slide show with background music player
- Stop : Stop/go to previous menu
- ▲/▼ : select an item in the menu up and down
- Prev : go to previous track / page
- Next : Go to next track / page
- Enter : acknowledge menu selection ,Play

# FUNCTIONS AND CONTROL METHODS

## MOVIE

After selecting Movie Playback function, you will see Movie File lists on the screen

### Movie List



- Stop : go to previous menu
- ▲/▼ : select an item in the menu up and down
- Prev : 1page up
- Next : 1page down
- Enter : Selected file play



Movie preview / Movie List  
 → Move Preview is enabled, 3 seconds after highlight)

Selected file information

### Movie - Movie Playback

Various types of video file & subtitle are supported, due to built-in Codec. (Not applicable to video files beyond HD)



Resolution capacity up to 800 x 450 (under 4 Mbps) is pressed (refer to Subtitles)



During MOVIE Playback, Help Menu Bar shows up on the screen the moment MENU button is pressed

- Subtitles:**
- ① adjust On/Off at Movie Help Menu Bar
  - ② adjust On/Off, pressing PN on the remote

# FUNCTIONS AND CONTROL METHODS

### Movie Help Menu Bar



- ▶ start / pause Playback
- ⏏ Stop playback and go back to move file list
- ⏮ go to previous track
- ⏪ fast backward : ( x2 → x3 → x4 → x5 → Play )
- ⏩ fast forward: ( x2 → x3 → x4 → x5 → Play )
- ⏭ go to next track
- ⓘ show details of Movie file
- ⏏ Zoom ( x2 → x3 → x4 → 1x )

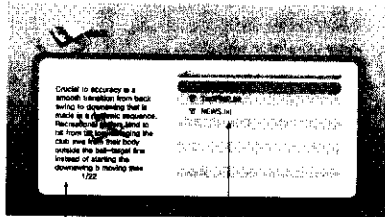
- Stop : go to previous menu
- Menu : Help Menu Bar on/ off
- Prev : go to previous track
- Next : Go to next track
- ◀/▶ : select an item in the menu left and right

# FUNCTIONS AND CONTROL METHODS

eBook

After selecting e-Book Playback function, you will see e-Book File lists as shown

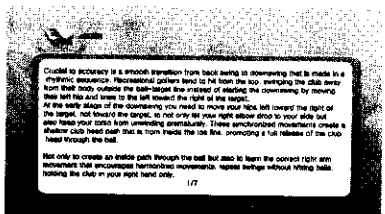
## eBook File List Frame



Selected file information    File List

- Stop : go to previous menu
- ▲/▼ : select an item in the menu up and down
- Enter : Play
- Slide : Background Music on & file play

## eBook Play



Auto Scroll : Auto scrolling by unit or time

- Stop : go to previous menu
- ▲ : Line up
- ▼ : Line down
- Prev : 1page up
- Next : 1page down

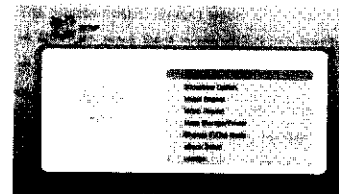
# FUNCTIONS AND CONTROL METHODS

## SET UP

There are items included in Setup Menu as Language, Slideshow Effect, Slideshow Speed, Music Repeat, Video Repeat, Mass Storage/Printer, Default Setup, Version

### [Setup Menu Frame]

(Highlight one of the submenus by pressing ▲▼ keys and press Enter and than press Stop go to previous menu)



- ⊕ Language : Kor/Eng
- ⊕ SlideShow option
  - SlideShow Speed : Normal /Fast /Slow
  - SlideShow Effect : Normal /Random /Bottom\_Top / Top\_Bottom /Left to Right / Right to Left
  - Background Music : BGM On / Off
  - Slide show : Slideshow On / Off
- ⊕ Music Repeat: Repeat one / Folder Repeat / Folder Sequence
- ⊕ Video Repeat: Repeat one / Folder Repeat / Folder Sequence
- ⊕ Auto play : Photo / Movie / None →(For the auto play function you make the each folder (Movie, photo) in the root folder. And put file into each folder)
- ⊕ e-BOOK SETUP
  - Auto scroll : Scroll On / Off
  - Auto scroll unit : Line / Page
  - Auto scroll time : 1, 3,5, 10,15, 30, 60, 120, Sec
  - Background music : BGM On / Off
- ⊕ Default setup
- ⊕ Version : Check the now firmware version

## APPENDIX A: Display modes

### Functional Overview

#### ► Quick and Simple Movie Playback

- Almost any kinds of Movie Files can be played (DivX3, DivX4, DivX5 (.avi), XviD (.avi))  
(A license for DivX / MPEG-4 decode is required / Up to 800x450 (under 4Mbps))
- Built-in hardware Codec supports up to MPEG4 movie file (Movie files stored in any kinds of Flash Memory Cards, USB Memory Bar are designed to be played directly without the need of PC)

#### ► Simultaneous playback of Photo and music (USB2.0 High Speed HOST)

- enjoy your Photo Slide Show through TV set or PC with your back ground music on)
- Photo Preview allows quick and easy search

#### ► Easy Update

- Either a flash memory card or an USB memory device is enough for Owner to download a new firmware and install it in the set.

### Product Details

#### ► Basic Operation

- Multimedia Playback directly from external storage such as flash memory cards, external USB HDD, USB memory bar
- USB Card Reader to other devices.

#### ► Interface

Control Input	IR Remote Controller (Included)
Video Output	Component : 720p
Audio Output	2 Channel Stereo (L, R)

#### ► USB Device

USB flash memory bar

#### ► Socket

CF Type II, 4 in 1 Multi Socket

#### ► Supportable Flash Memory Card Type

Supported Flash Memory Cards	CompactFlash	8MB ~ 8GB
	Microdrive / ST1 Drive	1GB, 2GB, 4GB / 2.5GB, 5GB, 6GB, 8GB
	xD-Picture	16MB ~ 2GB : M-CARD, H-CARD
	MultimediaCard	8MB~ 4 GB, MMCPlus, MMCmobile, MMCmicro
	Secure Digital	8MB ~ 2GB, miniSD, microSD (SDHC, 2GB~)
	Memory Stick / Duo	4MB ~ 128MB
	Memory Stick Pro / Duo	256MB, 512MB, 1GB, 2GB

#### ► Supportable Multimedia Format

Supported Date Type	Movie	DivX3, DivX4, DivX5 (.avi) / XviD (.avi) MPEG-1 (.mpeg/.mpg) / MPEG-2(.mpeg/.mpg) MPEG-4 (.mpeg/.mpg V3 avi) A license for DivX / MPEG-4 decode is required / Up to 800x450 (under 4Mbps)
	Music	MPEG-2, MPEG-1 layer 2, MP3, WMA, low complexity ACC, OGG(optional)32KHz, 44.1KHz, 48KHz, 88.2KHz, 96KHz
	Photo	JPEG : JIFF, EXIF(.jpg) -Baseline JPEG : below 5120 x 3840

## APPENDIX B: Troubleshooting

#### 1. No Power is supplied

- check for the power cable connection

#### 2. The remote control doesn't work

- check to see if there is any object between the set and the remote.
- ensure that the batteries are installed with correct polarity
- install new batteries

#### 3. No picture, distorted color picture, picture shaking

- Adjust Video Output in menu option
- Check the TV set is properly adapted for the incoming Video signal from the set
- Check for local interference such as electrical appliance or power tool

#### 4. Failure to recognize Flash Memory Card

- Check the Flash Card is connected to the corresponding port soundly.
- Check for physical damage of the Flash Card
- Check if the Flash Card is within the technical support range (refer to specification)

#### 5. Poor picture (During Photo Playback)

- Check the image file or memory card is okay. You may inspect it in other devices like P.C. or Digital Camera

#### 6. Poor Sound (During Music Playback)

- Check the music file or memory card is okay. You may inspect it in other devices like P.C. or MP3 player.

#### 7. No subtitle (during Movie Playback)

- Check to see if the subtitle file is below 200 kb in size.

#### 8. Small images

- The image is supposed to be displayed in original scale. You may facilitate Zoom function for this.

#### 9. No or noisy sound

- check to see if the volume is turned down to '0'
- Are the audio cables installed properly?

#### 10. Failure to recognize USB connection

- Check the USB devices works properly. You may inspect it in other devices like P.C.
- When you know the USB device is okay, please contact the dealer from where you purchased the set.

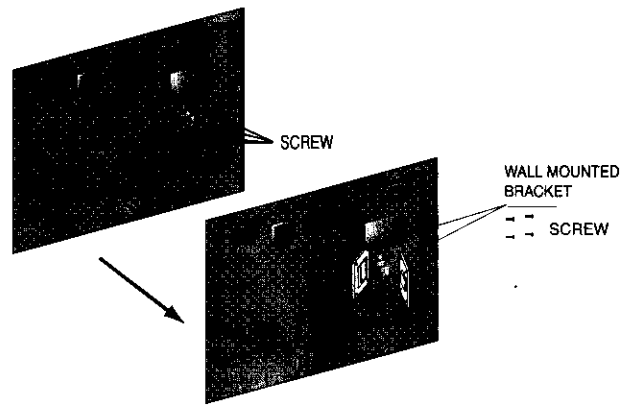
#### 11. Strange letters

- check for the current language adjustment using SETUP menu

#### 12. No Subtitle

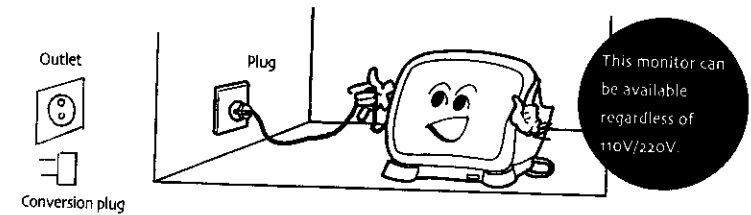
- Check to see if the subtitle is switched on at the state of Movie Help Menu Bar.
- Try 'V-out' button on the remote for adjustment.

## When using VESA standard wall-mounting devices



- Remove a hinge cover.
- Remove the stand after losing screws fixing the stand.
- Fix Arm or wall-mounted bracket at the screw holes (4 places) located in the middle part of the rear LCD TV, with screws.

## TO CONNECT THE POWER



**Be sure to connect the conversion plug to the power plug by the outlet!**

- This monitor can be available both in AC 110V / 220V 60Hz
- Various input voltage (within a range of AC100~240V) can be available. (Do not use it in the voltage higher than a rated voltage)
- 110V/220V selector switch is not necessary. This monitor can be operated directly without a special operation.

## CAUTION



- Make sure to operate this monitor in the rated voltage described in the user's manual or the monitor. (When the voltage higher than the rated voltage is supplied, it may give damage to a receiver.)
- If you do not use the monitor for a long time, you must pull out the power plug from the inlet for safety.

# SPECIFICATIONS

Model		LS22AB2		
PANEL	Panel Type	LTM220M1-L02(Glare)		
	Display Color(colors)	16.7M		
	Pixel Pitch(mm)	0.282(H) x 0.282(V)		
	Resolution(pixel)	1680 x 1050(RGB vertical stripe)		
	Contrast Ratio	1000 : 1 (Typical)		
	Brightness(cd/m2)	400 (Typical)		
	Response Time	Rise Time + Decay Time(msec)	5(Typical)	
		Decay Time	--	
		G to G	--	
	Viewing Angle(degrees)	80°(L/R), 80°(U/D) (at CR ≥ 10)		
Feature	Video	Deinterlace	Yes	
		Digital Comb Filter	3D	
		Dynamic Contrast Improvement	Yes	
		Skin Color Enhancement	Yes	
		Aspect Ratio Correction		
		Color Temp	9300K(x=283y=297)/6500K(x=313y=329)	
	Audio(option)	Output (W)	2W(mono)	
		PIP	Yes	
	Function	Multi-Language OSD	6 Language(Note 1)	
		USB	USB2.0	
		CF CARD JACK	8MB ~ 8GB	
	Input	MMC CARD JACK	8MB ~ 8GB	
		image device	1/3" RGB Color DPS sensor	
		Effective Pixels	720(H) x 540(V)	
	CAMERA	Resolution	540TVL	
		Sensitivity	0.8Lux(F1.2@40IRE)	
		WDR	Yes	
		Built-in Lens	1/3" format f=3.5 ~ 12mm, F1.7, Manual Iris Lens	
		White Balance	2000 ~ 8000°K Auto Tracking	
		Video	MPEG1, MPEG2, MPEG4	
		MMP	AUDIO	MP3
		Photo	JPEG, MJPEG	
	Output	AV(Composite)	Yes * 1ch(BNC Jack)	
	Power Supply		100 ~ 240V (50/60Hz)	
	Power Consumption (Watts)		62W	
	Accessories		Power Cable, Or Manual, Remote	
	Others	Regulation	Safety	cTUVus
			EMI	FCC
		Dimension (W x H x D)	Unit	502 x 395.8 x 68 mm
Net			8kg	
Stuffing Q'ty		40 FT	1250 sets	
		20 FT	625 sets	
Operating		Temperature	0°c ~ +40°c	
		HUMIDITY	35% ~ 80%	



This monitor has received the EMI (Electromagnetic interference) test for the business. Accordingly, a seller or user needs to know about it. If you purchase the erroneous monitor, be sure to exchange it into non-business monitor in the shop where you buy it.

