

# VITEK

PERFORMANCE YOU NEED  
QUALITY YOU TRUST

## VT-IR1B/24

BLACK AND WHITE INFRARED CCD CAMERA



### FEATURES

- 1/3" B/W CCD CAMERA WITH 6MM LENS STD.
- 420 LINES RESOLUTION
- I.R. RANGE BEYOND 45 FEET
- 56° BEAM SPREAD
- SEMI-COVERT 840NM WAVELENGTH
- PHOTOCCELL AUTOMATICALLY DETECTS DARKNESS TO PRESERVE ENERGY
- OPTIONAL LENS CONFIGURATIONS(8 + 12MM)
- 24 VAC POWER INPUT
- 12 VDC VERSION ALSO AVAILABLE

*The VT-IR1B/24 is a highly versatile black & white camera capable of delivering crisp, clear black & white images in total darkness. Low voltage 24vac and 12vdc versions are available for ease of installation. A durable aluminum construction and built-in fan with photocell make the VT-IR1B/24 and VT-IR1B/12 ideal for any indoor or outdoor surveillance applications.*

# VITEK

INDUSTRIAL VIDEO PRODUCTS, INC.  
"QUALITY PRODUCTS AT AN AFFORDABLE PRICE"

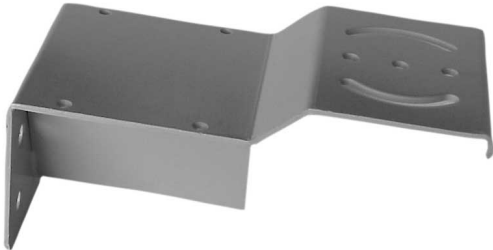


PERFORMANCE YOU NEED  
QUALITY YOU TRUST

# VT-IR1B/24

## SPECIFICATIONS

Pick Up Device	1/3" CCD Image Sensor Internal Transfer type
Picture Elements	512H x 492V (EIA)
Resolution	420 TV Lines
Scanning System	525 Line / 60 Fields (EIA)
SYNC. System	Internal SYNC.
S/N Ratio	Better than 45dB (AGC OFF)
Gamma Correction	.45
Shutter Control	1/60 To 1/10000 SEC
Video Out	1.0V P-P / 75 OHM
Lens Mount Type	Board Lens Mount 6mm F1.8 Standard
LED Lifetime	Approximately 6000 hours
Heat Dissipation	Built-In fan / Ventilation Holes / Aluminum Construction
Wave Length	840nm
Beam Spread	56°
Range	50 Feet
Min. Illumination	0 LUX (illuminator on) 0.2 LUX (illuminator off)
Power Source	24 VAC / 12 VDC (Model VT-IR1B/12)
Power Consumption	450 mA
Power on	CCD Camera Direct From Power Supply IR Illuminator From CDS Control
Dimensions	4.1"W x 5.1"H x 6.3"L
Weight	1.93 lbs



OPTIONAL WALL MOUNT  
VT-IRMT



INDUSTRIAL VIDEO PRODUCTS, INC.  
9970 GLENOAKS BLVD. UNIT B  
SUN VALLEY, CALIFORNIA 91352  
PHONE: 888-VITEK-70 818-771-0300  
FAX: 818-771-0400  
[WWW.VITEKCCTV.COM](http://WWW.VITEKCCTV.COM)