



VTD-C13A

Alpha Series Indoor Color
Dome Camera



- 1/3" Color CCD image sensor w/420 TV Lines
- Minimum Illumination of 0.5 Lux / F2.0
- 3.6mm / f2.0 Standard Lens
- 12VDC Operation

VITEK



CAUTION
RISK OF ELECTRICAL SHOCK
DO NOT OPEN



1. Unit contains uninsulated dangerous voltage within the enclosure that may be of sufficient magnitude to constitute a risk of electric shock to persons
2. Only use DC Power Supply
3. Read & Keep these instructions.
4. Heed to all warnings and follow all instructions carefully.
5. Do not use near water.
6. Clean only with dry cloth.
7. Do not block any ventilation openings. install in accordance with the instructions.
8. Do not install near any heat source such as radiators, heat resistors, stoves, or other apparatus (including amplifiers) that produce heat.
9. Do not defeat the safety purpose of the polarized or grounding-type plug. A polarized plug has to blades with one wider the other. A grounding type plug has to blades and a third grounding plug. The wide blade or the third prong are provided for safety. if the provided plug dose not fit into your into your outlet, consult an electrician for replacement of the obsolete outlet.
10. Protect the power cord from being walked on a pinched particularly at plugs, convenience receptacle, and the point where they exit from the apparatus.
11. Only use attachment/accessories specified by VITEK.
12. Use only with cart, stand, tripod, bracket, or table specified by the manufacturer, or sold with the Unit,
13. Unplug this unit during lightning storms or when unused for long periods of time.
14. Refer all servicing to qualified service personnel, Servicing is required when the unit has been damaged in any way, such as power-supply cord or plug is damaged, liquid has been spilled or objects have fallen into the unit, the unit has been exposed to rain or moisture, does not operate normally or has been dropped.
15. Do not attempt to service this product yourself as opening or removing covers may expose you to dangerous voltage or other hazards. Refer all servicing to qualified service personal.

CAUTION - To reduce the risk of electric shock, do not perform any servicing other than contained in these operating instructions unless you are qualified to do so.

INSTALLATION

1. Turn "Dome Cover" (as shown in Figure 1) counterclockwise to the end and take it off.
2. Mark the positions of one "power and video line hole" and four "screw holes" on the ceiling. (as shown in Figure 2 & Figure 3).

Drill a hole on the proper position of the ceiling for the power and video line to pass through. And then screw "base" to the ceiling.

Note: Screws for installation are not supplied within the sales package. Please prepare by yourself and use proper screws.

Suggestions:

- a) For safety, please let the power and video line concealed behind the ceiling.
 - b) If the installation spot doesn't allow the installation personnel to screw power and video line hole on the ceiling, they could cut the concave edge of "base" to let the power and video line pass through.
3. Adjust the view angle of the lens (as shown in Figure 3). Then put "dome cover" back to the "base" and turn clockwise.



Figure 1 - Dome Cover



Figure 2

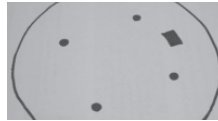


Figure 3 - 4 Screw Holes



Figure 4 - Power & Video Line Hole

CONNECTION

1. DC12V Input Terminal

Connect the power terminal of the camera to a 12V DC regulated power supply.

Note: Please use the correct power adaptor, DC12V (regulated), to operate this unit. The power tolerance of this unit is DC12V \pm 10%. Over maximum DC 12V power input will damage this unit.

2. Video Output Connector (VIDEO OUT)

Connect the camera video output and the monitor video input with 75 Ω coaxial cable.

SPECIFICATIONS

Image Sensor	1/3" Interline transfer type color CCD
Effective Pixels	512(H) x 492(V)
Resolution	420 TVL
Minimum illumination	0.5 Lux / F2.0
S/N Ratio	More than 48dB (AGC off)
Electronic Shutter	1/60 (1/50) to 1/100,000 sec.
Lens	f3.6mm / F2.0
Lens Angle	70 Degrees
IRIS Mode	AES
Gain Control	Auto
White Balance	ATW
Video Output	1.0Vp-p composite, 75 Ohms
Power Source	12VDC
Current Consumption	100mA
Dimensions	Diameter x Height: 3.94" x 2.36" (100mm x 60mm)



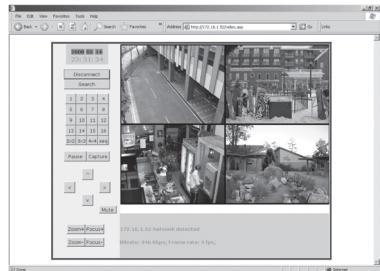
VTD-C13A Inside

OTHER GREAT PRODUCTS BY VITEK[®]



alpha By VITEK
series

VT-H Series **4, 8, and 16 Channel Digital Video** **Recorders with H.264 Compression**



The Alpha Series VT-H Series Digital Recorders combine the latest H.264 Compression technology with stability and simple operation. H.264 Compression is the next generation of MPEG4 allowing up to 50% smaller file sizes for increased storage capability and/or resolution as well as a more fluid internet transmission speed. VT-H Series DVRs can be controlled via supplied IR Remote control or remote client.

- 4, 8, or 16 Video Inputs with 1 BNC & 1 VGA Output
- H.264 Compression
- Supports both Dynamic and Static IP Addresses
- Up to 120 IPS Recording / Live Display
- Remote Viewing over the Internet or LAN
- Supports one internal SATA Hard Drive
- 250GB to 1TB Internal Storage Options
- Quadplex operation enabling simultaneous recording, playback, networking, and backup
- 4 Audio Inputs & 1 Output
- Control locally via Included IR Remote control
- Backup via Ethernet or USB

H.264
Compression





VTM-LCDP Series 15", 17", and 19" Professional LCD Monitors with Looping BNC Inputs

- 15", 17", and 19" Professional LCD Display Panels
- Designed for continuous 24/7 operation
- VGA, Looping BNC Composite, and S-Video Video Inputs. DVI & HDMI Inputs on 17" & 19" Versions
- Resolution up to 1280 X 1024 (17" & 19")
- Stereo Audio Input/Output
- VESA Standard Mounting



VTC-IRLED24 Series Color Bullet Cameras with 24 IR LED Illumination

- 1/3" Color CCD image sensor
- 520 TV Lines of Resolution (VTCIRLED24H) / 420 TVL (VTC-IRLED24A)
- Minimum Illumination of 0.6 Lux (0 Lux / F2.0 with IR LEDs On)
- 24 IR LEDs with 50' Range
- 3.6mm / f2.0 Standard Lens
- Automatic IR triggers On under low illumination / Off under Normal Illumination
- Sun Shroud to reduce glare and dissipate heat
- 12VDC Operation

NOTES

VITEK LIMITED PRODUCT WARRANTY

VITEK products carry a three (3) year limited warranty. Digital recording and storage products are also warranted for 3 years except for the hard drives which carry their own independent factory warranty from the hard drive manufacturer. VITEK warrants to the purchaser that products manufactured by VITEK are free of any rightful claim of infringement or the like, and when used in the manner intended, will be free of defects in materials and workmanship for a period of three (3) years, or as otherwise stated above, from the date of purchase by the end user. This warranty is non-transferable and extends only to the original buyer or end user customer of a Vitek Authorized Reseller.

The product must have been used only for its intended purpose, and not been subjected to damage by misuse, willful or accidental damage, caused by excessive voltage or lightning.

The product must not have been tampered with in any way then the guarantee will be considered null and void.

This guarantee does not affect your statutory rights.

Contact your local VITEK Reseller should servicing become necessary.

Vitek makes no warranty or guarantee whatsoever with respect to products sold or purchased through unauthorized sales channels. Warranty support is available only if product is purchased through a Vitek Authorized Reseller.



28492 CONSTELLATION ROAD VALENCIA, CA 91355
WWW.VITEKCCTV.COM | 888-VITEK-70